

Africa WASH & Disabilities Study



Nate Kamban, Project Manager

the Collaboratory
for strategic partnerships and applied research

 MESSIAH
COLLEGE



Mali Water & Disability Study

- **Objective**
 - *Examine issues of access to and use of clean water and sanitation facilities by persons with disabilities*
- **Study Facilitation**
 - *Led by faculty and multi-disciplinary undergraduate research teams*





Why?

- **Scope**
 - *15% of global population (WHO)*
 - *80% live in a developing country (UN)*
 - *20% of the world's poorest people (UN)*
 - *90% of children with disabilities do not attend school (UN)*
- **Christian Commitment**





Process

- **Project Sequence**
 - *Formal survey*
 - *Focus groups*
 - *Development of research priorities*
 - *Research and development*
 - *Field testing*
 - *Site visits*
 - *Final reporting & presentations*
 - http://www.messiah.edu/collaboratory/media_press/documents/hiltonreport_reducedsize.pdf





Outcomes

- **Project Outcomes**
 - *Development & use of a participatory development process*
 - *Assistive technology development*
 - Access and use of hand-pumps
 - Transport and domestic use of water
 - Access and use of latrines
- *Guidelines for inclusive WASH initiatives*
- *Workshop modules*





Outcomes: Pump Modification





Outcomes: Receptacle Tipppers



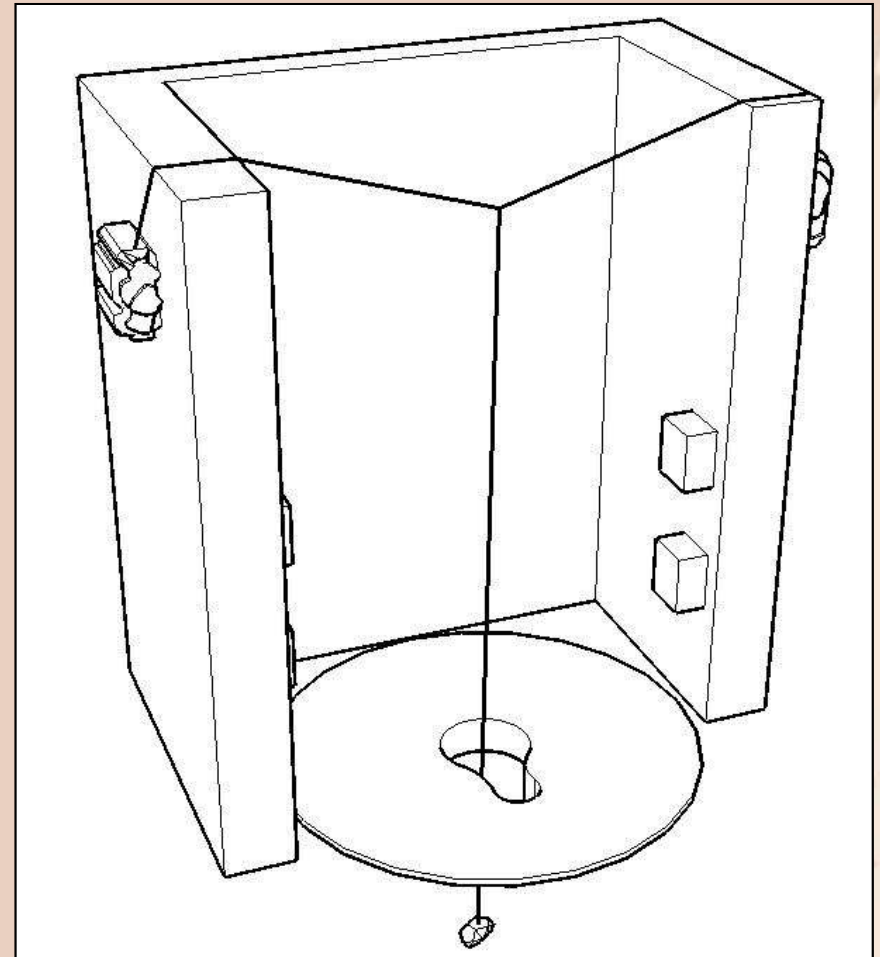
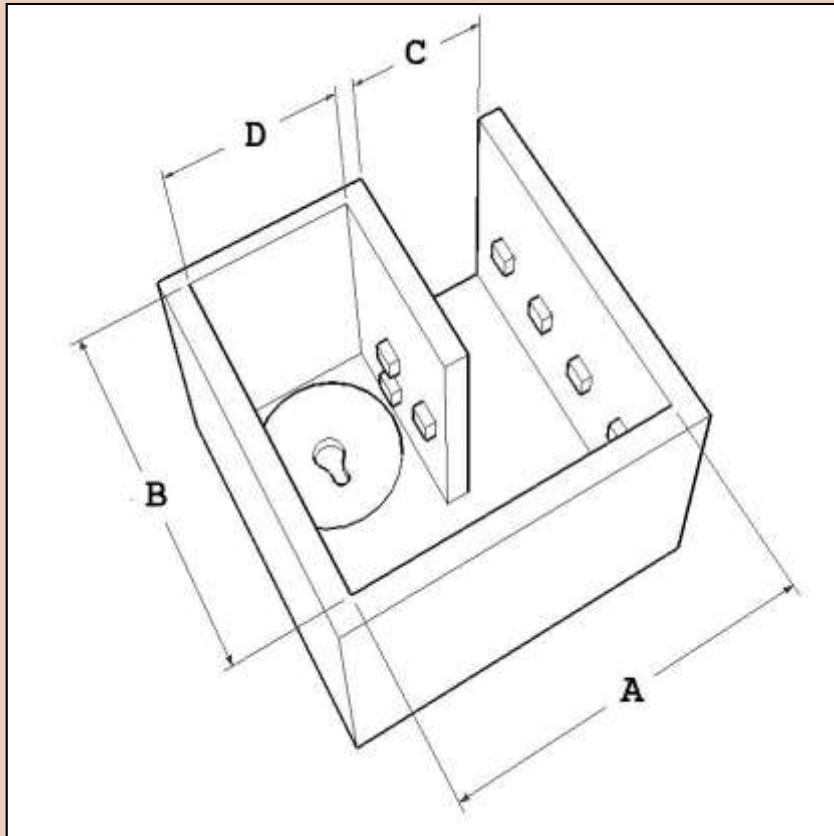


Outcomes: Latrine Seats & Chairs





Outcomes: Latrines





Africa WASH & Disabilities Study (AWDS)

- Objectives
 - *Expansion to Niger and Ghana*
 - *“WASH and Disability” workshops*
 - *Assistive technology transfer, development and testing*
 - *Assistive technology dissemination*





AWDS Workshop

- **Content**

- *Disability foundations*
- *Introduction to inclusive development*
- *Theology of inclusive development*
- *Mali case study*
- *Community visits*
- *Preliminary technology development*
- *Inclusive WASH action plans*





AWDS Technology Dissemination Plan

- **Phases**
 - *Artisan selection and training*
 - *Initial field trials*
 - *Evaluation*
 - *Prototype improvements*
 - *Secondary field trials*
 - *Evaluation*
 - *Prototype improvements*
 - *Additional artisan training*
 - *Marketing and dissemination plan development*





Additional Outcomes

- **Advocacy**
 - *Community members*
 - *Development workers*
- **Reflection of Christian Values**
 - *Intrinsic value of each human life*
 - *Restoration of hope and dignity to persons with disabilities*





World Vision Staff Testimonials





Challenges & Lessons Learned

- **Lessons Learned**
 - *Value of partnerships*
 - *Value of SLT support*
 - *WASH, disability & culture*
 - *Sensitized artisans*
 - *Inclusive practice in program planning and implementation*



Questions?

