

Community Supported Agriculture



OUR FINAL ASSURANCE ON FOOD SAFETY

PREPARED AND PRESENTED
DR. DOY NACPIL, BSAH, DVM

NEDEX.....V.President
PGS-NE Prov. Chairman
PCSAN.....Phil. Representative

For FOOD SAFETY ASSURANCE...

Is there a STANDARD for food safety?

Do you have CERTIFICATION?

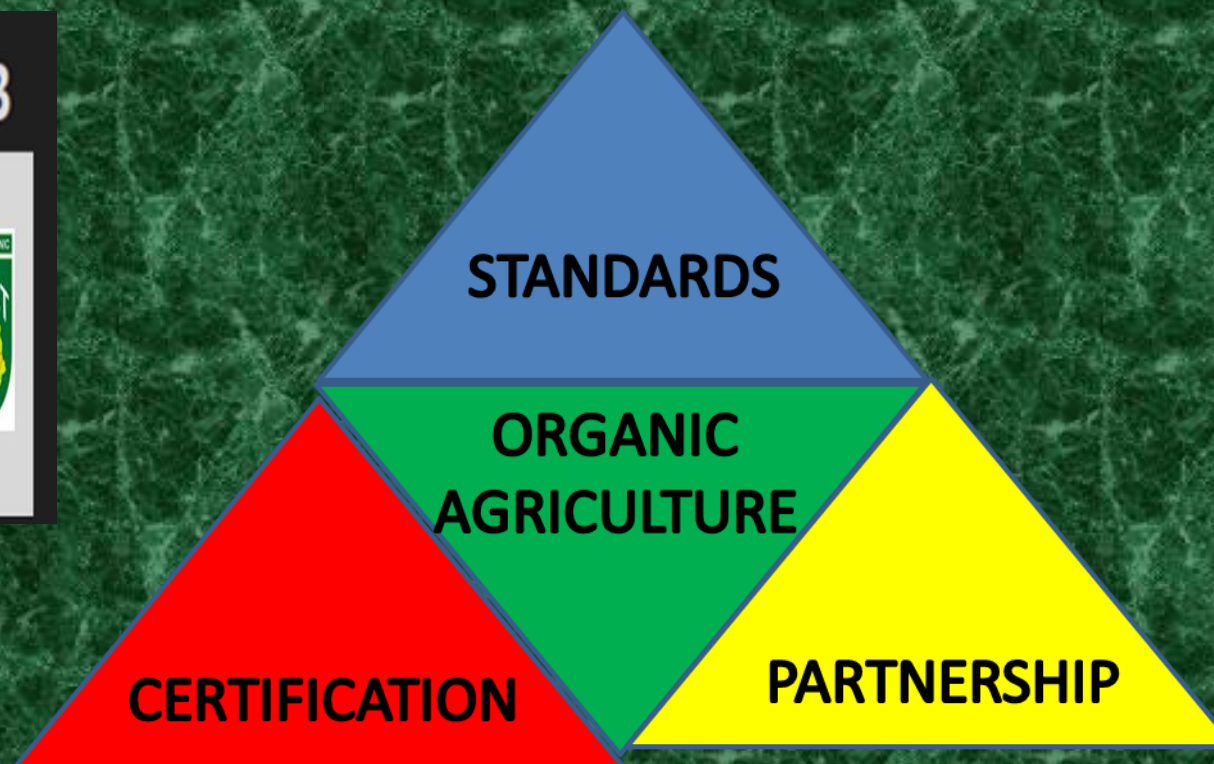


BUT, DO YOU KNOW...

Who produces your FOOD?

How it was produced?

Officially Accredited OCB



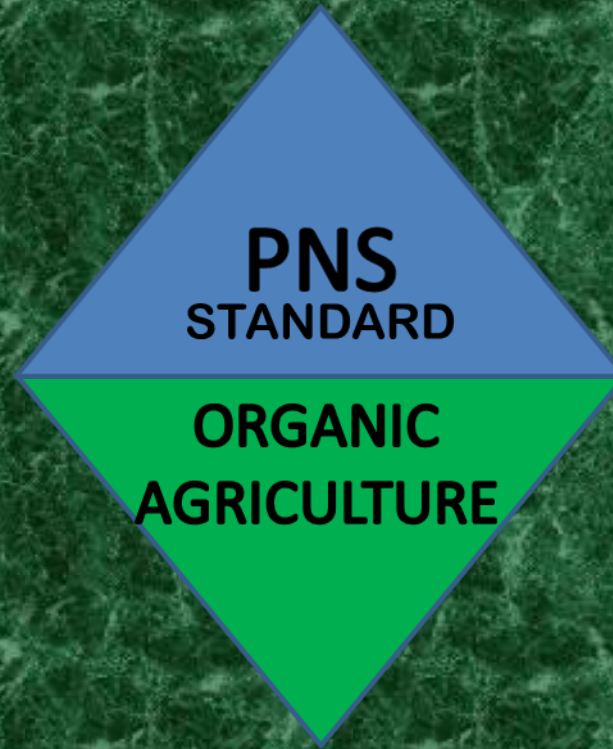
PHILIPPINE NATIONAL STANDARD PNS/BAFS 07:2016

ORGANIC AGRICULTURE

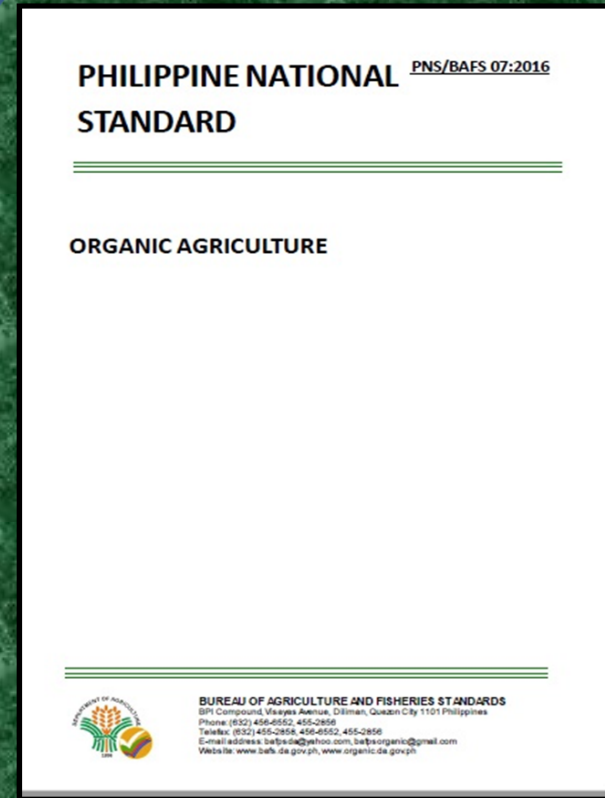


BUREAU OF AGRICULTURE AND FISHERIES STANDARDS
BPI Compound, Visayas Avenue, Diliman, Quezon City 1101 Philippines
Phone: (632) 456-0552, 455-2856
Telex: (632) 455-2856, 456-0552, 455-2856
E-mail address: bafsa.org@yahoo.com, bafsaorganic@gmail.com
Website: www.bafs.da.gov.ph, www.organic.da.gov.ph

In Organic Agriculture, there are 3 pillars that will assure our Consumers on FOOD SAFETY , These are **STANDARDS, CERTIFICATION , and PARTNERSHIP**

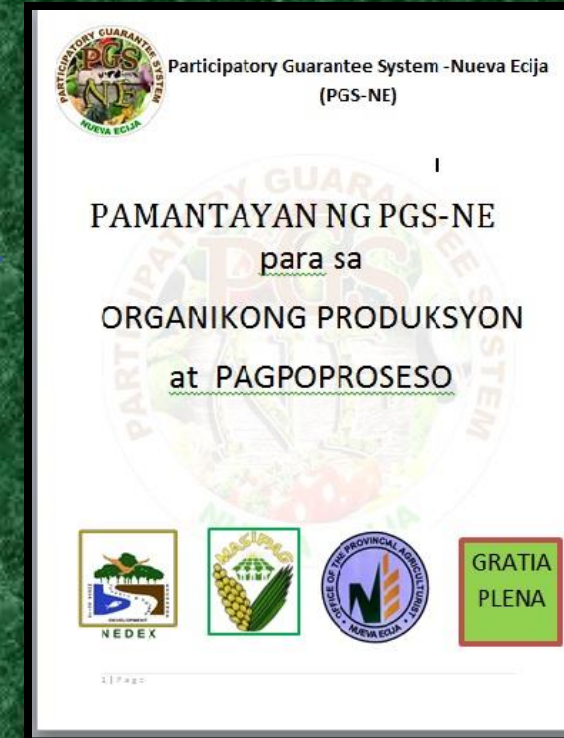
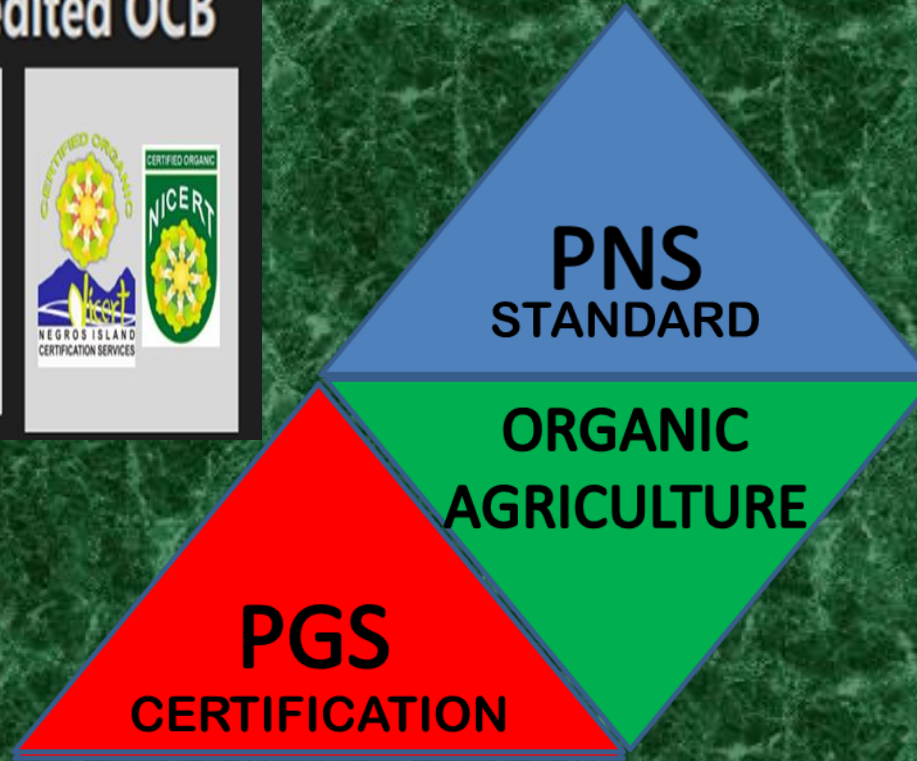


The No 1, Pillar needed in Organic Agriculture is the PNS or the Philippine National Standard on Organic Agriculture. This is the Bible of the Organic Agriculture. It contains the required minimum standard. What is allowed or not.



PNS 2016, complied with the ASEAN Standard for Organic Agriculture (ASOA)

Officially Accredited OCB

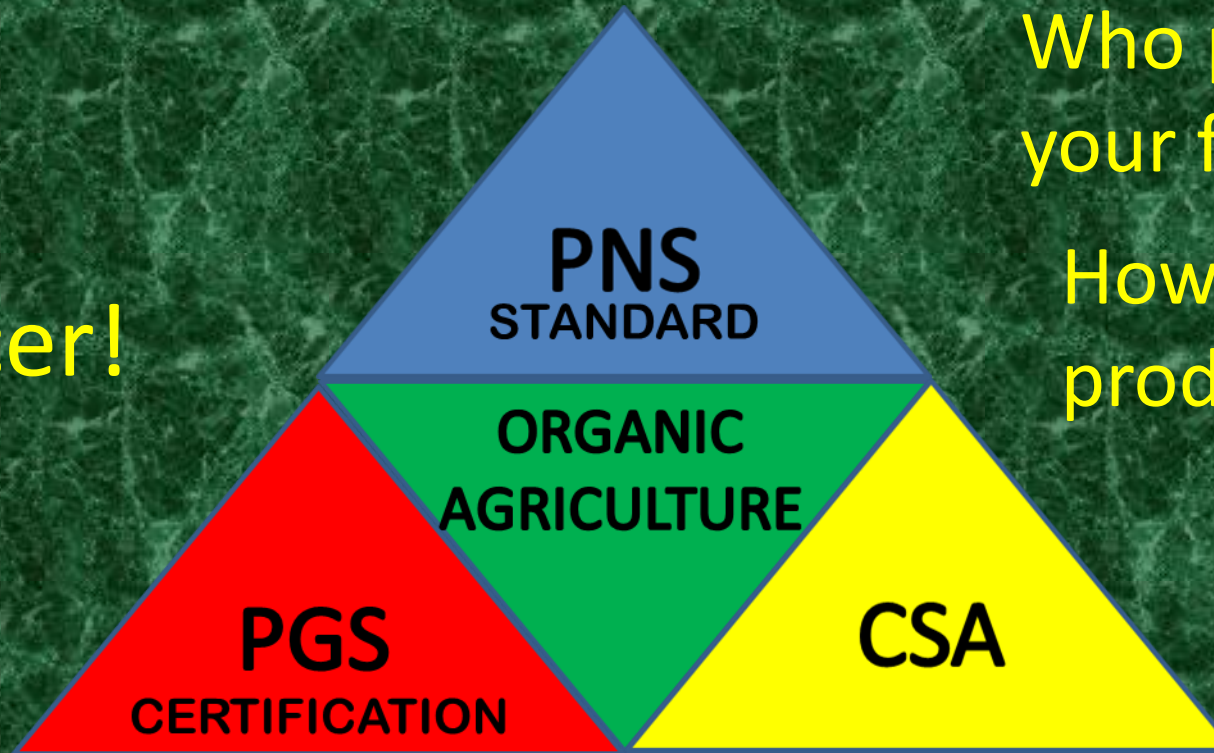


PARTICIPATORY GUARANTEE SYSTEMS (PGS)

"Participatory Guarantee Systems (PGS) are locally focused quality assurance systems. They certify producers based on active participation of stakeholders and are built on a foundation of trust, social networks and knowledge exchange."

<http://www.ifoam.bio/en/organic-policy-guarantee/participatory-guarantee-systems-pgs>

Know
Your
Producer!



Who produce
your food?
How they
produce it?

In Community Supported Agriculture (CSA)....
As Producers, we WELCOME our Consumers to visit our
Farms and INVITE them to PARTNER with us
for the Assurance of Food Safety.

In CHINA ...



Contaminated foods from China flooding into the U.S. under the 'Organic' label

The Chinese food production industry is one of the world's least-regulated and most...

WISEMINDHEALTHYBODY.COM | BY NATURALNEWS.COM

Contaminated foods from China flooding into the U.S. under the 'Organic' label

<http://wisemindhealthybody.com/naturalnews/contaminated-foods-china/?c=sfm>

5 Reasons You Shouldn't Trust 'Organic' From China

<http://www.theepochtimes.com/n3/1612468-5-reasons-you-shouldnt-trust-organic-from-china/>



In the U.S ...



USDA reported in 2012 that 43% of the 571 samples of “organic” produce that were tested contained prohibited pesticide residues, and that “the findings suggest that some of the samples in violation were mislabeled conventional products, while others were organic products that hadn’t been adequately protected from prohibited pesticides.”

The Colossal Hoax Of Organic Agriculture

<http://www.forbes.com/sites/henrymiller/2015/07/29/why-organic-agriculture-is-a-colossal-hoax/2/#5e10182646ff>

Organic-Farming Boom Stretches Certification System

USDA Farms Out Inspections, but Thoroughness Is Questioned

“There are currently 81 accredited “certifying agents,” or groups that stamp food as organic in the U.S. But of the 37 that had a complete review this year, 23 were cited for failing to correctly enforce certification requirements on farms in audits, according to an internal Agriculture Department report. The 23 firms didn’t properly conduct onsite inspections or correctly review applications for organic certification, among other things, the report said.”

<http://www.wsj.com/articles/organic-farming-boom-stretches-certification-system-1418147586>

A separate Wall Street Journal investigation of USDA inspection records since 2005 found that **38 of the 81 certifying agents** failed on at least one occasion to uphold basic Agriculture Department standards.

In that time,

- 40% of these 81 certifiers have been flagged by the USDA for conducting incomplete inspections;
- 16% of certifiers failed to cite organic farms' potential use of banned pesticides and antibiotics;
- 5% failed to prevent potential commingling of organic and nonorganic products, according to the Journal investigation
- <http://www.foodlogistics.com/news/12027223/organic-farming-boom-challenges-usda-certification-system>

**In the
PHILIPPINES**



Free Range Native
Animals.... Brown
eggs.... Naturally
grown....

BE CAREFUL ... NOT ALL
NATIVE, FREE RANGE PIGS, CHICKEN AND EGGS
ARE ORGANICALLY GROWN...
AND MAY NOT BE SAFE TOO...



But what kind of feeds they are eating?

Do you know how they were produced?

PIGMENTED RICE



WARNING!
NOT ALL
BROWN,
PIGMENTED RICE
ARE
ORGANICALLY GROWN

Do you know Who produces your food?

Do you know How they produce it?

**Know Your
PRODUCER!**

Consumer-Producer Partnership

Community Supported Agriculture

CSA is a partnership between Farmers and Consumers in which the Responsibilities, Risks and Rewards of farming are shared.





URGENCI,

The International Network of Community Supported Agriculture

CSA around the world:

- First developed in Japan and Switzerland in the 1970s.
- 1980s the idea became popular in the USA and also spread to several countries within Europe. Particularly since the turn of the millennium CSA has received great attention and is experiencing considerable growth in many countries around the world.
- In 2008 URGENCI – The International Network of Community Supported Agriculture was formed. URGENCI is the leading organization for networking and promotion of CSA worldwide.

While CSA is the most common expression, the model has many different names in different languages.

CSA (Community Supported Agriculture): **USA, UK**

AMAP (Association pour le Maintien de l'Agriculture Paysanne): **FRANCE**

TEIKEI: **JAPAN**

GAS (Gruppi di Acquisto Solidale): **ITALY**

Solidarische Landwirtschaft: **GERMANY**

GASAP (Groupes d'achat solidaire de l'Agriculture paysanne): **BELGIUM**

ASC (Agriculture Soutenue par la Communauté): **QUEBEC/CANADA**

Reciproco: **PORTUGAL**

Съпричастно земеделие: **BULGARIA**

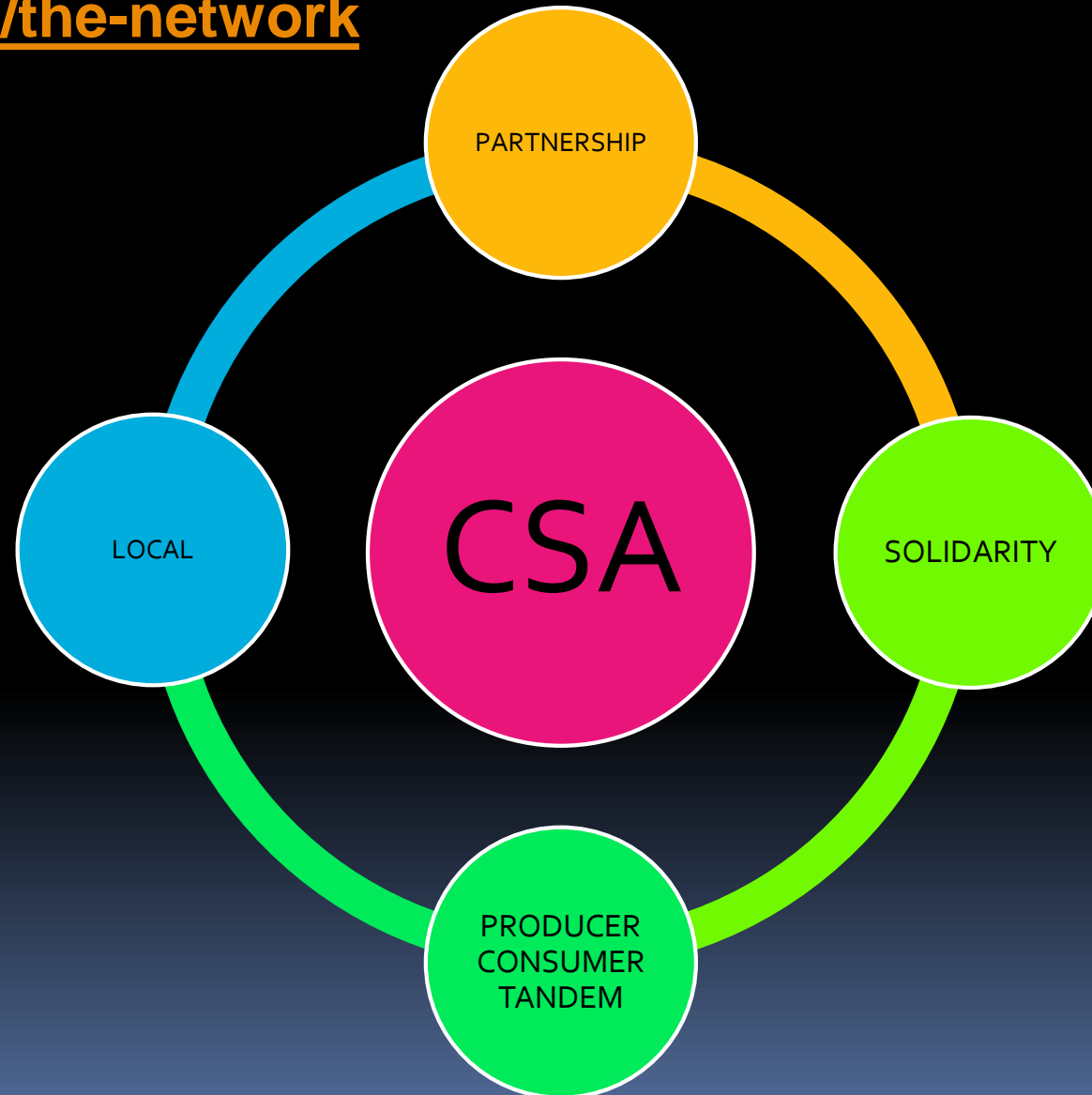
Grupa solidarne razmjene (GSR): **CROATIA**

Asociația pentru Susținerea Agriculturii Țărănești (ASAT): **ROMANIA**

FRACP (Fédération romande d'agriculture contractuelle de proximité): **SWITZERLAND**

FOUR FUNDAMENTAL IDEAS OF CSA:

<http://urgenci.net/the-network>



FOUR FUNDAMENTAL IDEAS OF CSA:

<http://urgenci.net/the-network>

1. PARTNERSHIP:

This partnership is characterized by a mutual commitment to supply (by the peasants) and up-take (by the consumers) of the food produced during each season.



2. LOCAL



this means promoting local exchange.

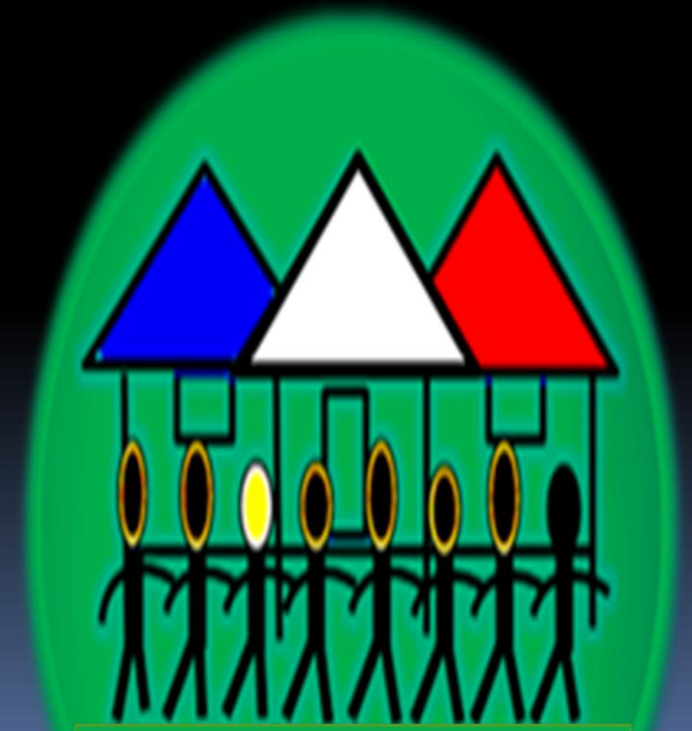
Local Solidarity-based Partnership between Producers and Consumers are part of an active approach to relocalising the economy.

3. SOLIDARITY:

Partnerships are based on solidarity between farmers and community:

Sharing both the risks and the benefits of healthy production that is adapted to the natural rhythm of the seasons and is respectful of the environment, natural and cultural heritage and health.

Paying a sufficient fair price up-front to enable farmers/peasants and their families to live in a dignified manner.



4. THE PRODUCER/CONSUMER TANDEM:



is based on direct
person-to-person contact
and trust,
with no intermediaries
or hierarchy
and no subordination.

Long Chain Distribution



**LOSS OF
FRESHNESS**



**POLLUTION
INCREASES**



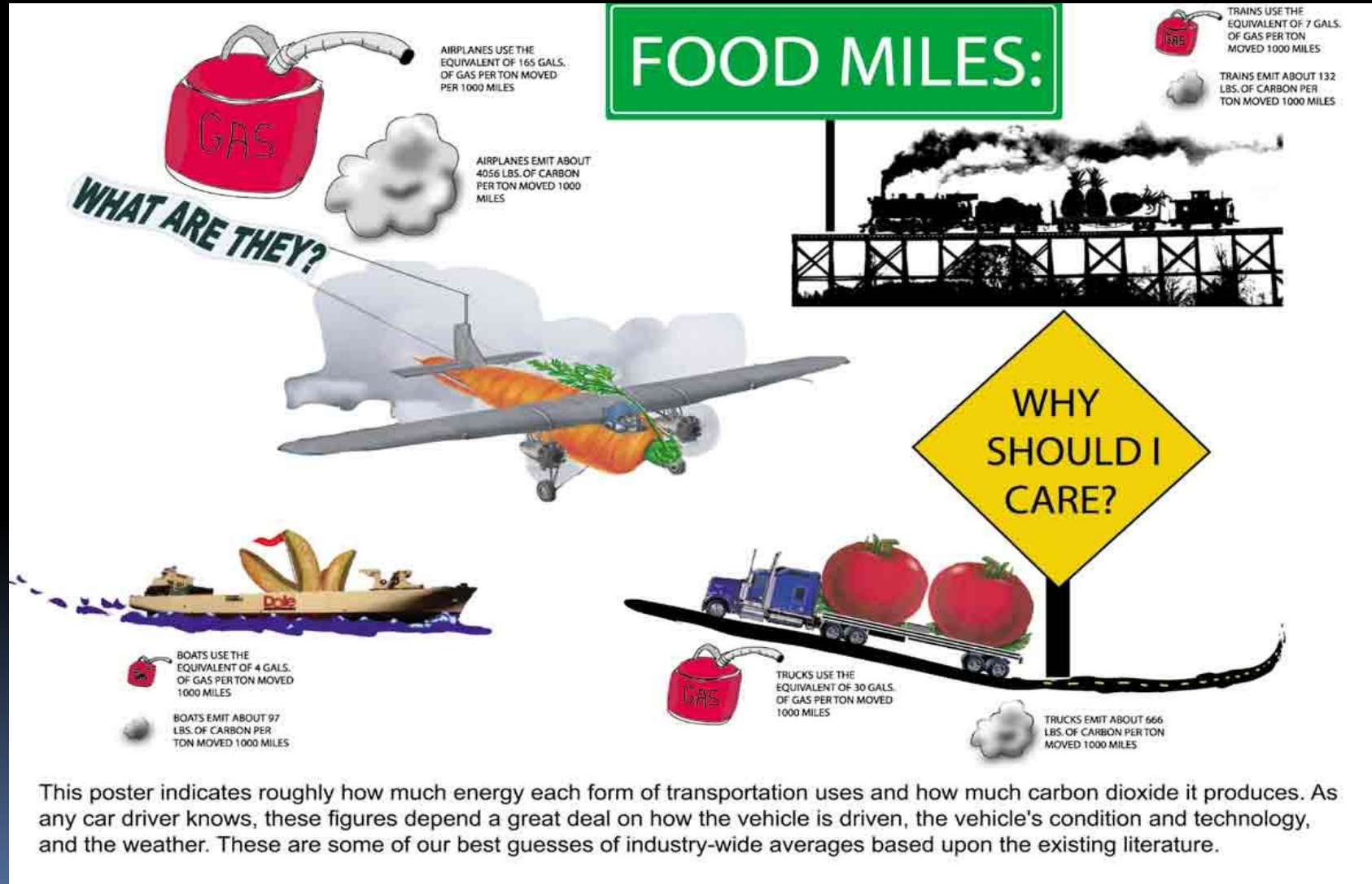
HIGH PRICE

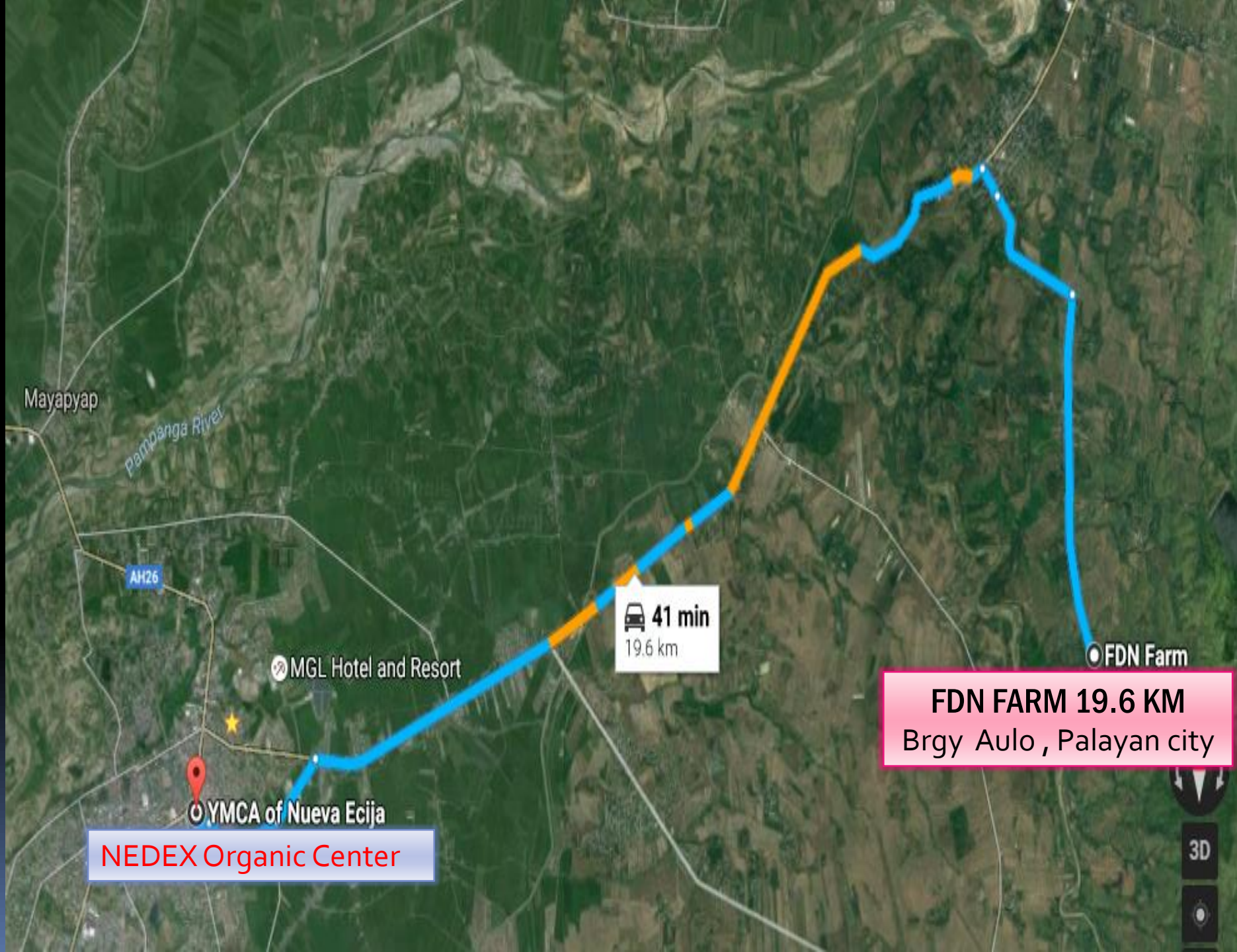


Community Supported Agriculture (CSA)

From Farm to Table
Bringing the Farm Closer to the Plate

Food miles: How far your food travels has serious consequences for your health, the climate and your pocket





Mayapyap

Pampanga River

AH26

MGL Hotel and Resort

YMCA of Nueva Ecija

NEDEX Organic Center

41 min
19.6 km

FDN Farm

FDN FARM 19.6 KM
Brgy Aulo , Palayan city

3D



NEDEX Organic Center

YMCA of Nueva Ecija

31 min
18.2 km

29 min
18.2 km

Market

Zaragoza

Santa Rosa

Saret Organic Farmville

SARET FARM 13.2KM
Brgy Liwayway, Sta Rosa

3D

**KABABAIHANG MASIGLA
NG NUEVA ECIJA , 29.5KM**
Bgy Ilog Baliwag , Quezon

Kababaihang Masigla Ng
Nueva Ecija (KMNE)

50 min
28.4 km

54 min
29.5 km

NEDEX

YMCA of Nueva Ecija

Talavera

Santo
Domingo

General
Mamerto
Natividad

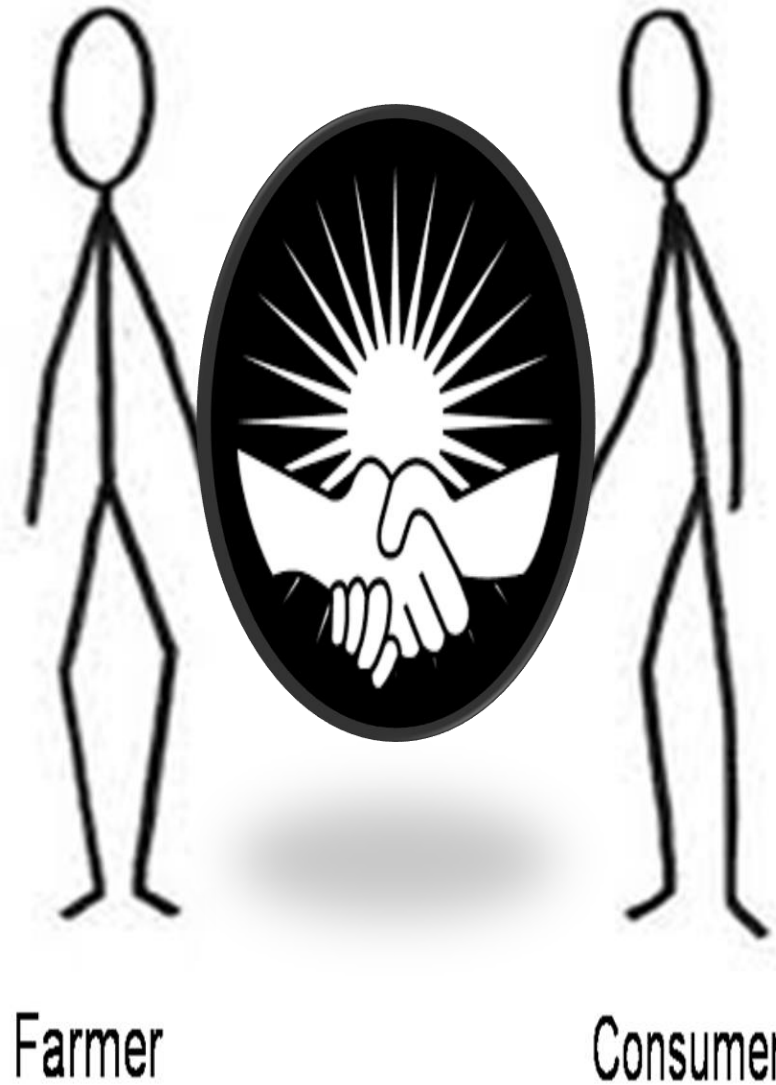
Licab

Aliaga

**CSA is also
about**

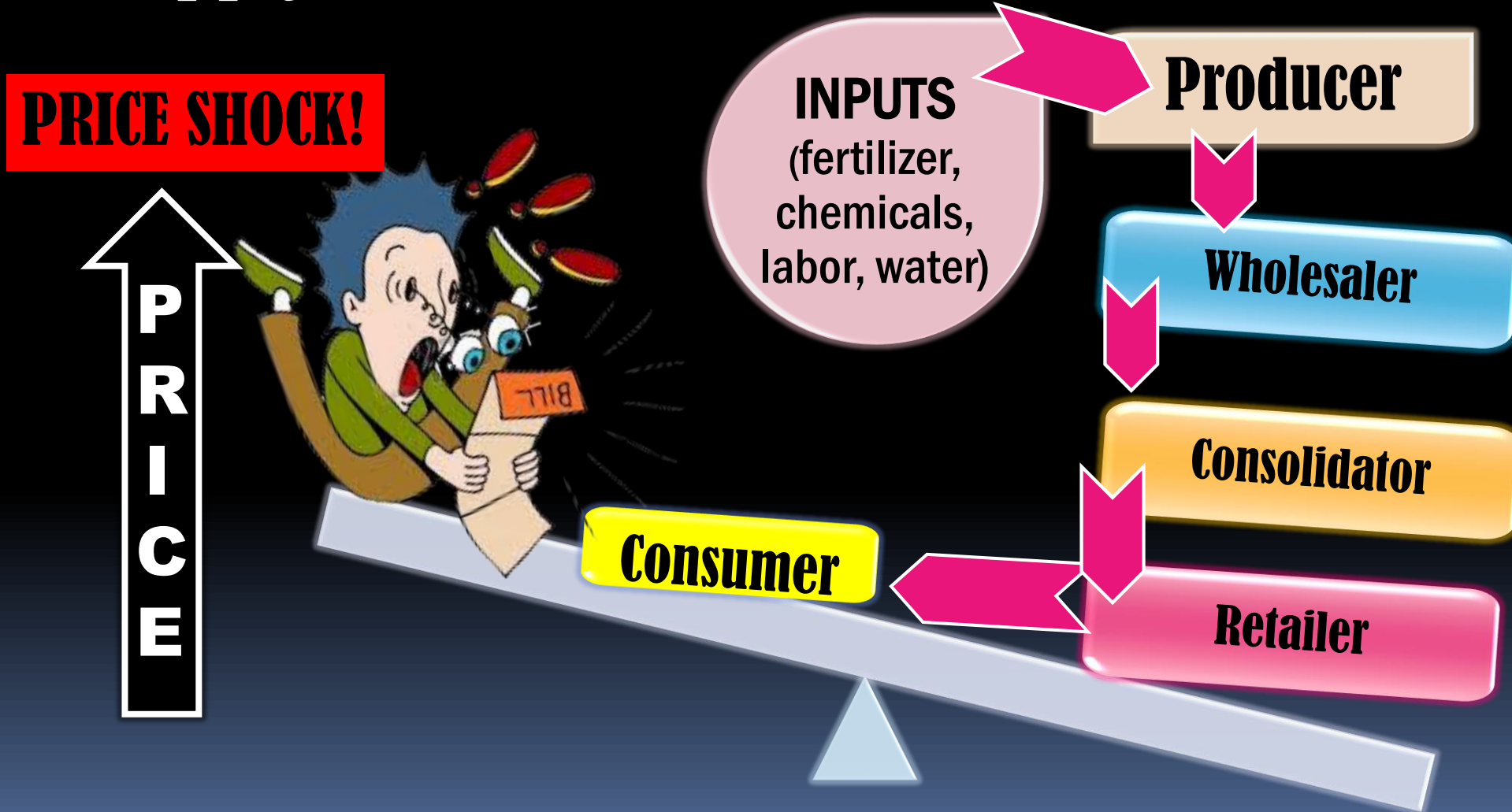
**CUTTING OUT
THE MIDDLE MAN**

**LOWERING THE PRICE
WITH
HIGH PROFIT**

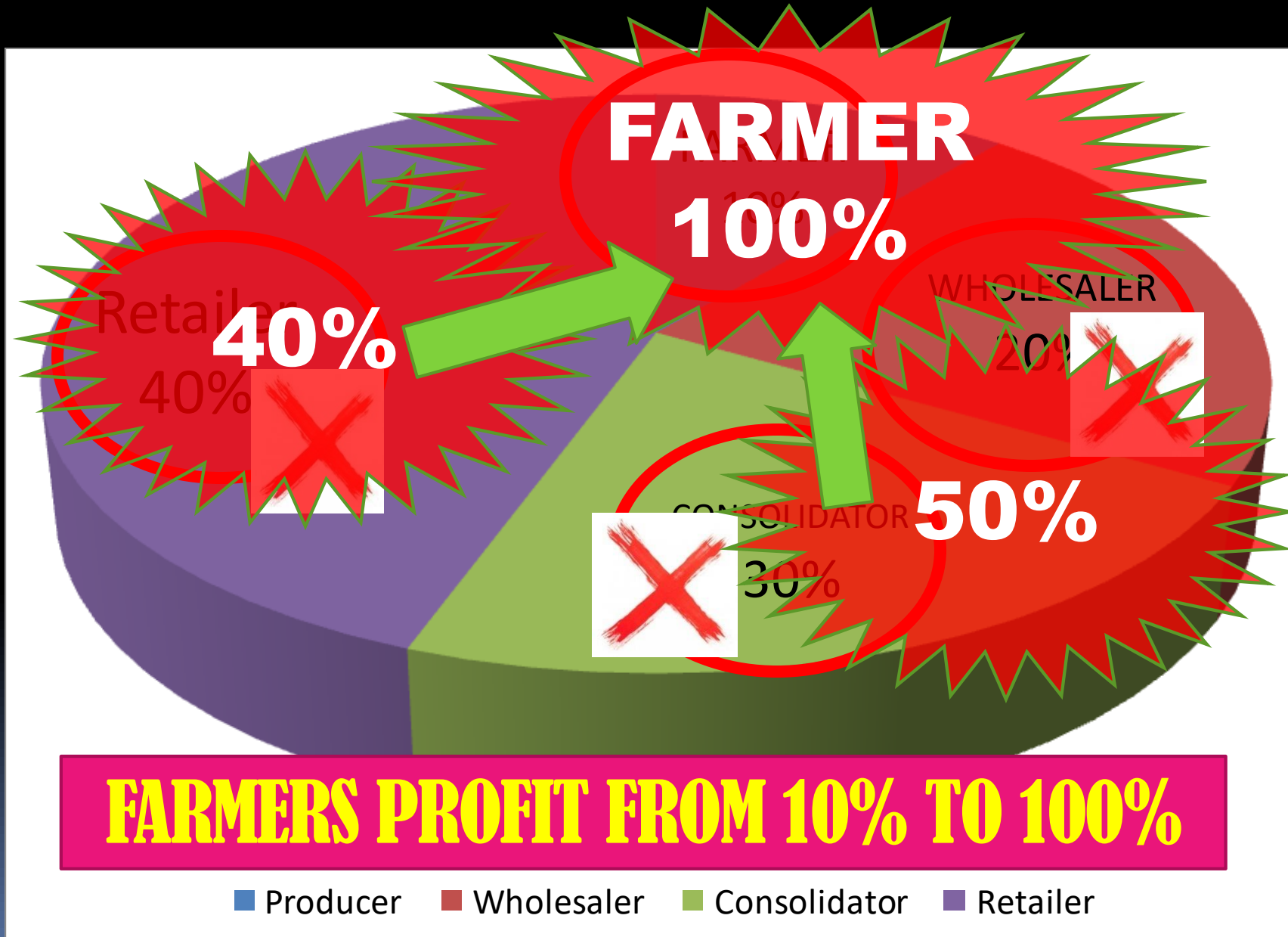


PRESENT CONDITIONS : Problem Analysis

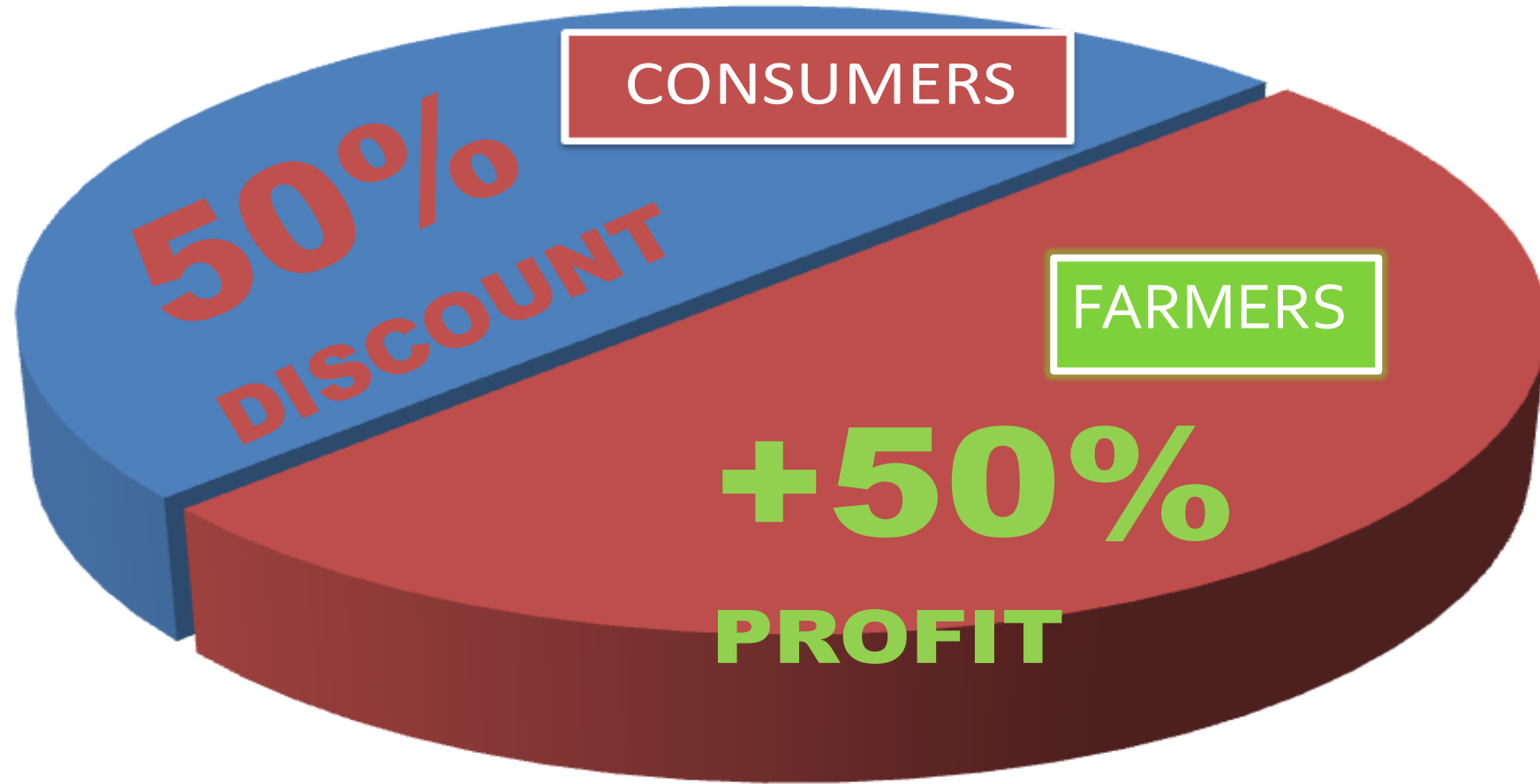
Supply-Value Chain



INCOME PIE



FARMERS PROFIT FROM 100%

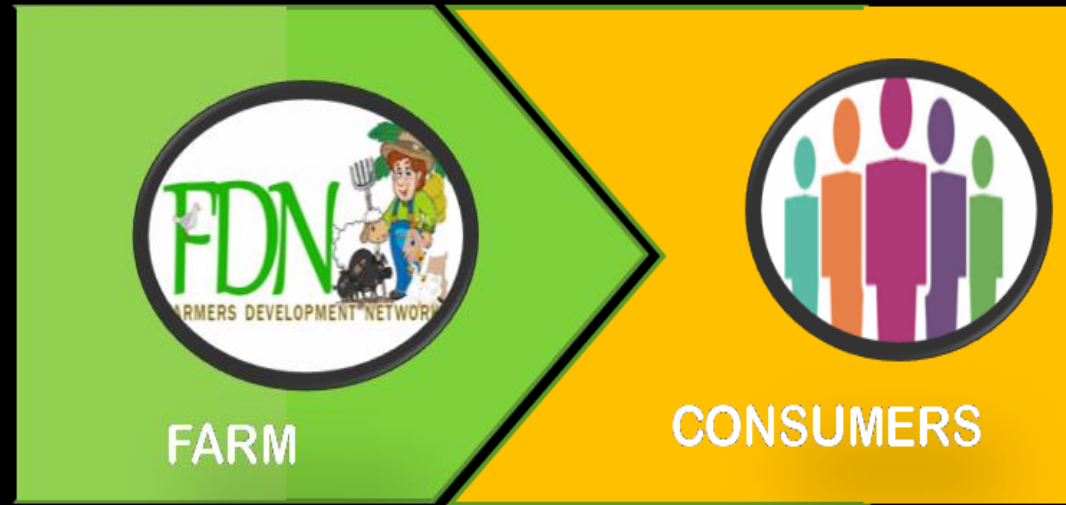


FROM FARMER TO FARMPRENEUR

Long Chain Distribution



OR



Community Supported Agriculture (CSA)

**Bringing the FARM of the FARMER
CLOSER
to the PLATE of the CONSUMER**

Farm



Plate

“Farmers from London”

Due to Agro Chemical Agriculture , mostly Farmers

- Became victims of Loan shark
- Became slave to loan
- Became poor or poorer
- Lost their land
- Lost their respect
- Farmers children hate Agriculture
- Farmers are dying without replacement
- Consumers/Eaters will lack food



FOR THE CONSUMERS

**Be careful of the food you buy even its label Organic ..
Theres a lot of Fake Organic in the Market
TO MAKE SURE FOR YOUR FOOD SAFETY**

1. Need to know who produces your food?
2. Better know it where it comes and how it was produced ?
- 3 .Better visit and make a partnership with your FARMER/ PRODUCER.

FOR THE FARMER/ PRODUCER

(Think and List of Customer/ Consumer in your Local area)

1. Prospect

a. Health conscious
(sick and don't want to get sick)



b. Eco Enthusiast

c. Religious Groups



2. Personal Customers

- a. Build relationship, follow up for their personal needs.
- b. Invite them on Seminar; Food Safety, Organic Agriculture
- c. Ask them to become your dealer for their families, relatives and friends and get discounts.

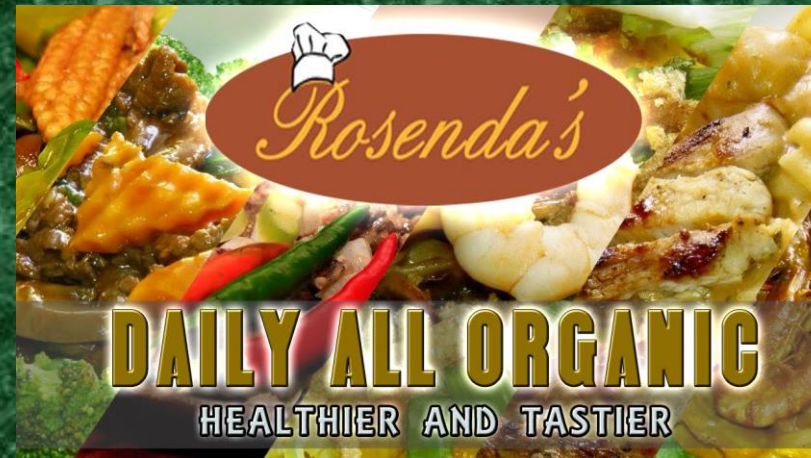
3. Partners

- a. Invite them in your Farm,
- b. Show your Organic food production, that is safe and nutritive.....your Water source, Bio-fertilizers, Bio-pesticides, Bio-animal feeds, Bio-security, Post harvest.
- c. Invite them to become your partners .. Ask them to invest or prepaid for their regular supply of safe and nutritious products.

From there, you can invite and network with other conventional Farmers to supply organic food for your partners.







REEL
TIME

#ReelTimeBagongBinhi

GMA
NEWS TV





Maraming Salamat Po Paunawa:

Ang Powerpoint po na ito ay gamit lamang para sa mga Trainors.
Hindi po pwedeng ang magkopya.