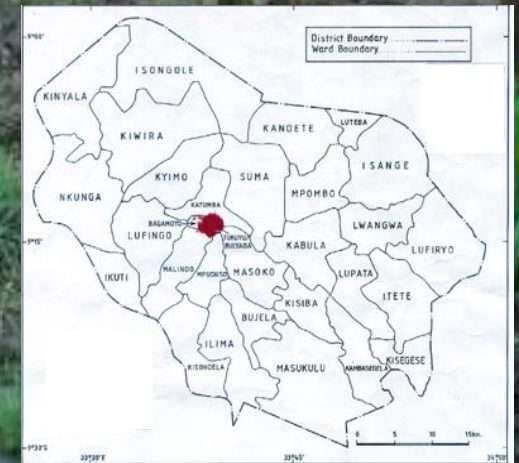




Dairy Development in SW Tanzania

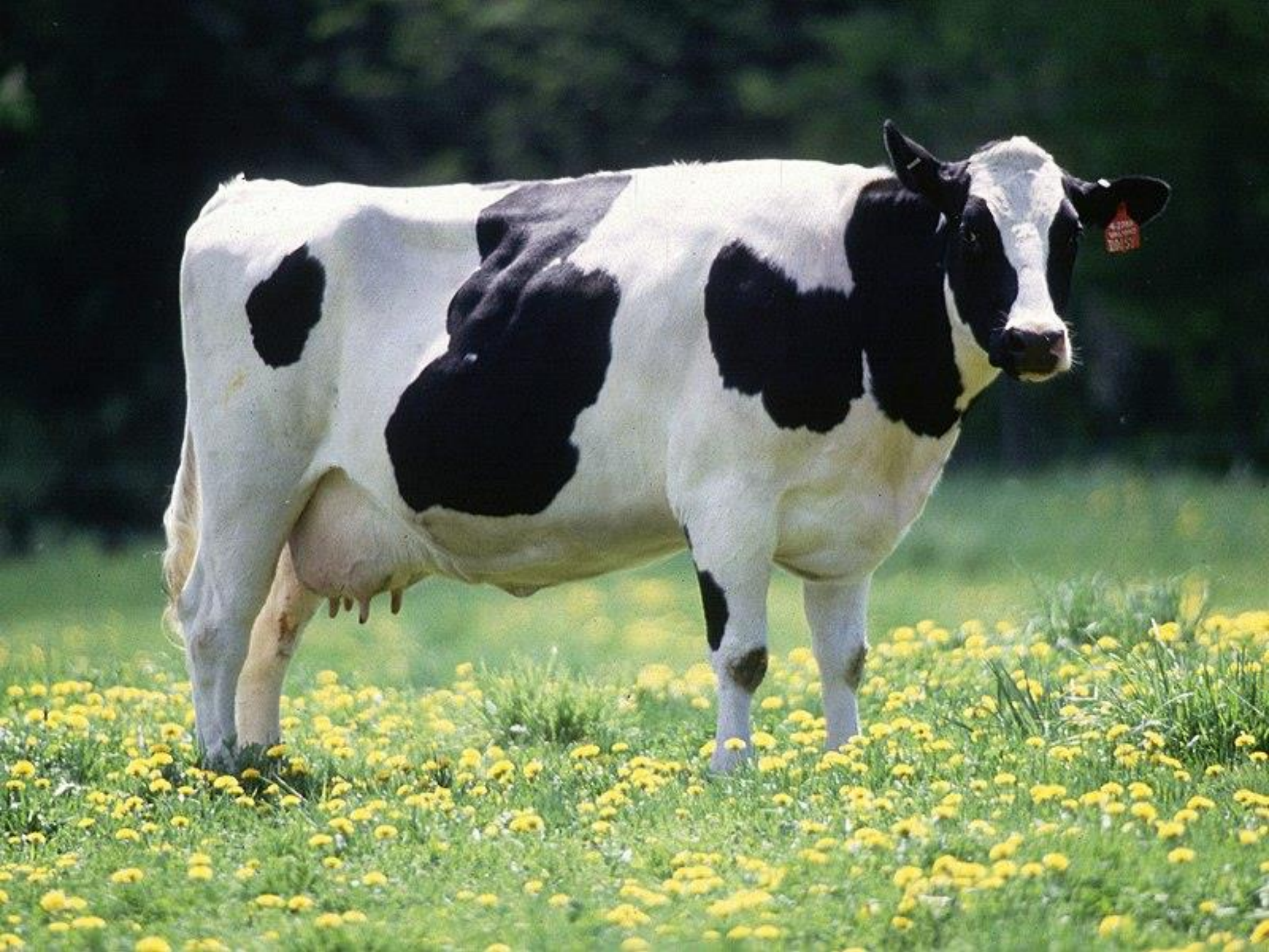
Ben Eyre, PhD Student, University of Manchester

Where in SW Tanzania?









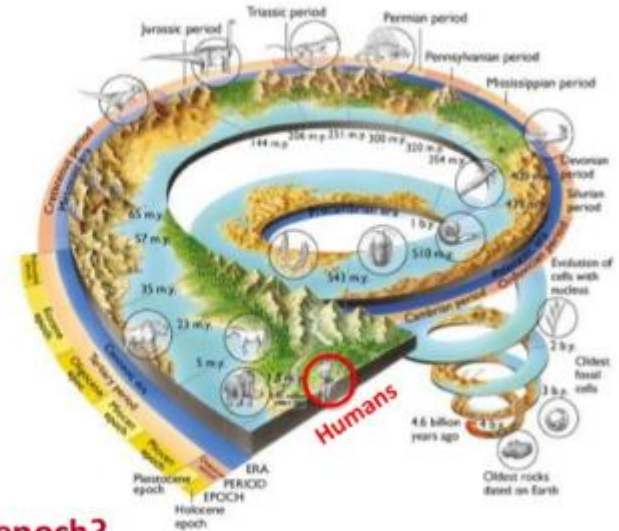


Where does my approach come from?

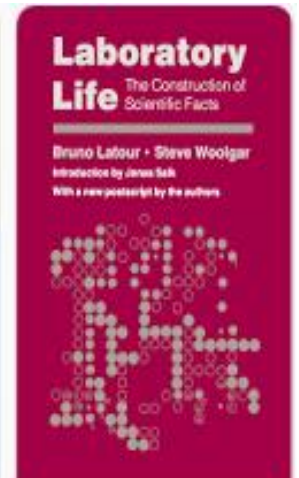
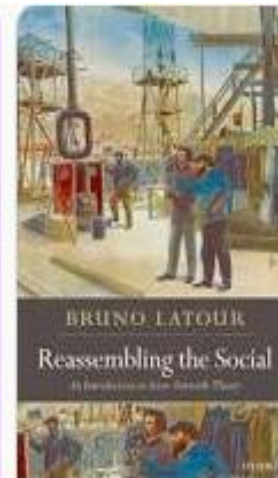
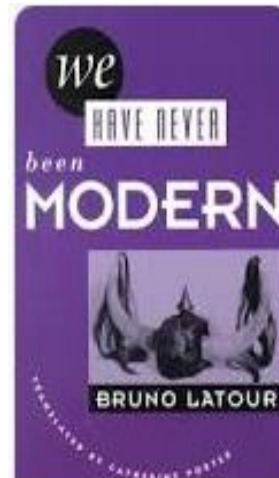


POLITIQUES DE LA TERRE
à l'Agence de l'Anthropocène

New challenges in the Anthropocene



A new geological epoch?





- Science and Technology Studies

- Bruno Latour: 'Technology is Society Made Durable' (1992)

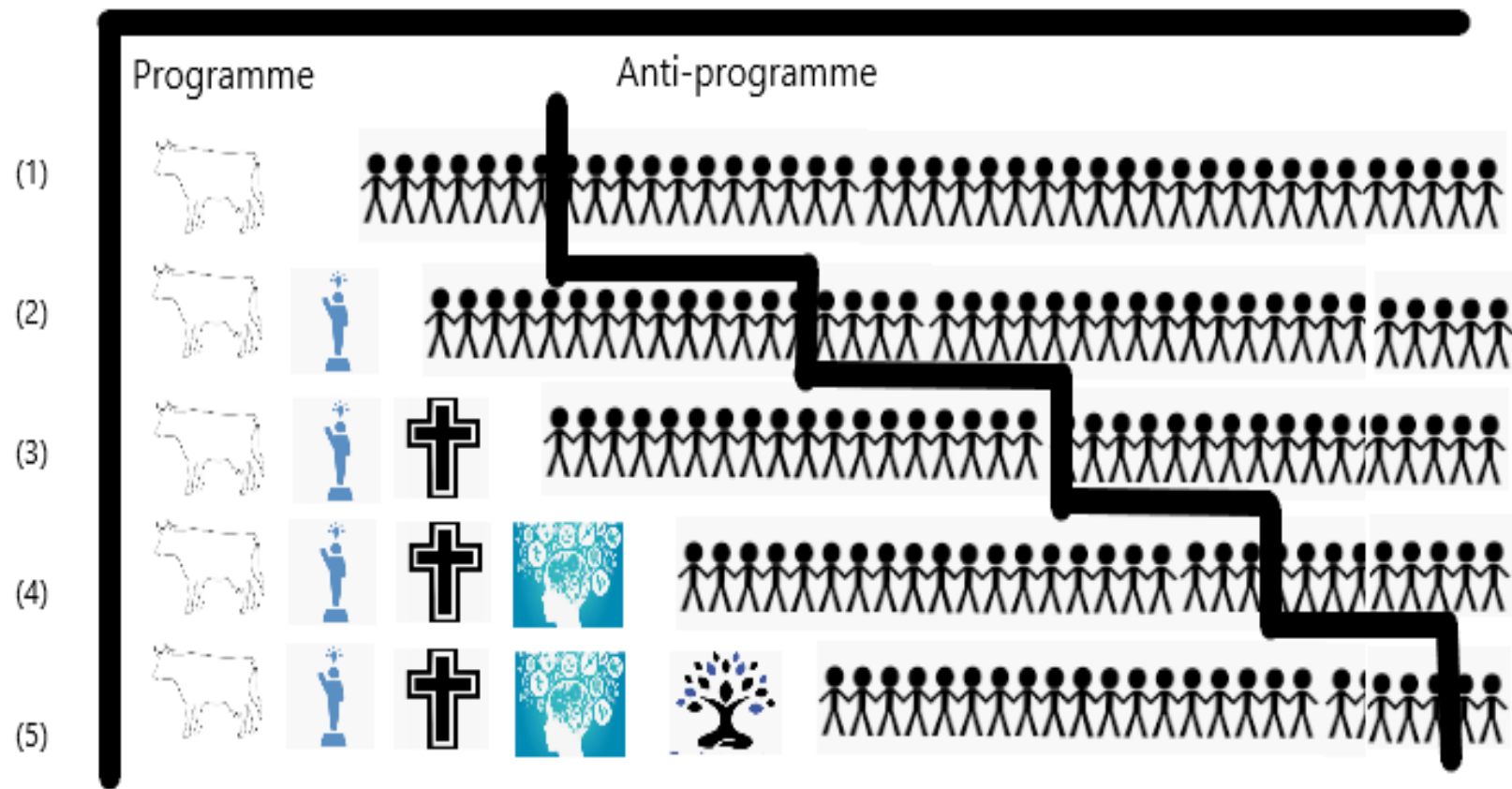
- Marianne de Laet and Annemarie Mol: The Zimbabwe Bush Pump: Mechanics of a Fluid Technology (2000)

Paradigm shifts behind dairy development

What I learned from discussions with Heifer staff and reading the organisation's resources:

- **'Not a cup, but a cow'**
- **Individual ownership**
- **Virtuous action**
- **Peer-to-peer training**
- **The dignity of giving**

Programme of action one

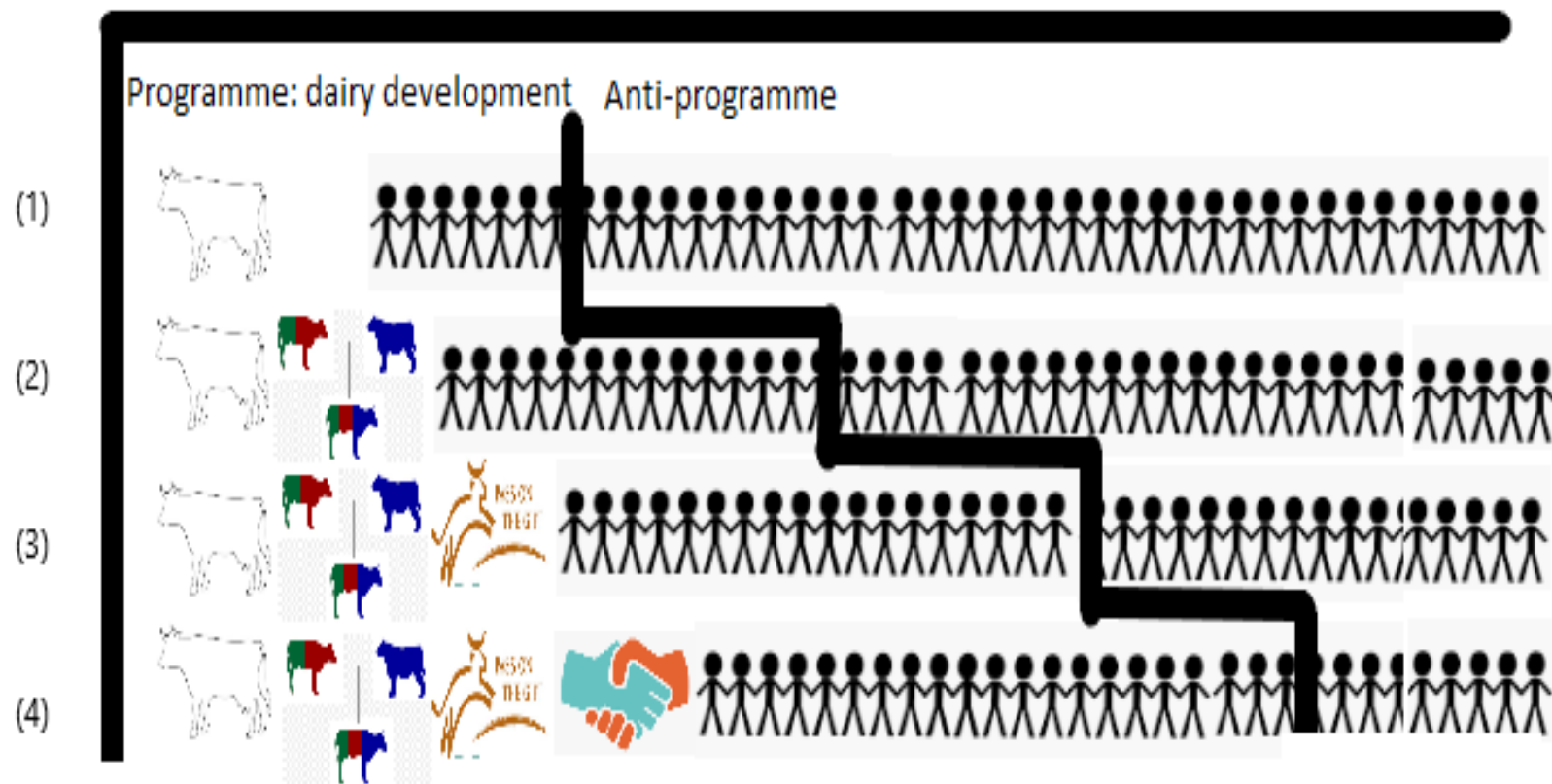


Paradigm shifts behind dairy development

What I learned from discussions with beneficiaries and participant observation in Gwamaka

- **Availability of dairy cows**
- **Cross-breeding**
- **HIT: adopted/adapted**
- **Kufufya 'traditional' cattle loans**

Programme of action two



Few fodder crops are planted



The benefits of dairy development:

- 99% said manure for their bananas. - 95% said they produced milk**
- 90% said they produced offspring**
- 10% mentioned bride price**

By better understanding how technology has been appropriated in the past we might better contribute to appropriate technology in the future.

Ben Eyre
University of Manchester

bp.eyre@gmail.com